



Illinois EI Family Receives National Attention

Of the hundreds of thousands of success stories in the world of early intervention, an Illinois family has caught the attention of the National Council for Exceptional Children (CEC). Featured in the current CEC's Annual Budget Book, this family's story attests to the benefits of Illinois Early Intervention. With the permission of the family, an excerpt of their story is shared with you...

Jaden Allen is 27 months old and lives with his family. Jaden receives early intervention services to help his family address their concerns related to Jaden's diagnosis of Down Syndrome. His early diagnosis allowed for referral for early intervention services very early in life and since then he has been receiving a combination of services that have changed over time to meet the changing needs of both Jaden and his family. Jaden currently receives developmental therapy, physical therapy, occupational therapy and speech therapy. He will begin attending a developmental play group that focuses on helping him use a combination of sign language and words to communicate his needs and interact with other children.

Jaden has made great strides with his gross motor development and is able to safely explore and play at home, but still works on walking up and down the stairs. Recently, he has begun to imitate simple functional signs to let his mom and others know when he wants to play, eat, and when he is finished with something. Jaden is also using more signs and some single words to communicate and interact with his family and early intervention providers. These newly developing communication skills are an area of exciting progress for Jaden and his family.



Jaden's mom shared the story that while pregnant with Jaden she had found out that the baby she was carrying might have Down Syndrome. Her doctors at that time gave her very little hope about how her baby would grow and develop. Thankfully, Jaden's family found a new pediatrician who also happened to have a child with Down Syndrome and referred them to the Illinois Early Intervention Program. Having services provided in their home by caring professionals has given the Allen family the strategies and supports to help Jaden make progress in all areas of his development.

The EI Training Program: A Year In Review and Looking Ahead

After three years of laying the foundation, the Training Program's regional approach to training is taking hold and reaching out to more providers. During the 2007-08 program year, Illinois Early Intervention Training Program sponsored events were held more proportionately and frequently, according to the demographic locale and needs of Illinois' EI providers. In addition to the required Systems trainings, more pediatric specific training events were held across the state. To better meet the CFC's training needs on a more local/regional level, the Training Program began implementing the regional training format in July of 2005. Regional Training Consultants, RTCs, focus on the needs and issues of their local or regional CFCs and early intervention providers, while actively connecting with the State levels of early intervention and reaching out to national entities for resources and supports. The Training Program's Staff of RTCs have been working to develop partnerships with CFC agencies, area pediatric hospitals and clinics, schools and service agencies to bring you, early intervention providers

Continued on page 2



TO REACH

**DHS
Bureau of EI
217.782.1981**

**Provider
Connections
800.701.0995**

**Central
Billing Office
(CBO)
800.634.8540**

**Early
Intervention
Monitoring
800.507.5057
217.726.2263**

**IL Early
Childhood
Intervention
Clearinghouse
800.852.4302**

**Hearing
and Vision
Connections
(HVC)
217.479.4318**

...‘A Year In Review and Looking Ahead’ continued from page one

and families, quality learning experiences and resources relevant to today's best practices in early intervention. Of the *200+ training events held this past program year, 57% were held in the Northern counties of the State, 26% in the Central counties and 17% in the Southern counties. This distribution of training events this past year is more closely representative of the provider population served than previous years.

Using provider feedback from the field and the Evaluation Surveys completed at Training Program events, new curricula have been introduced such as, ‘Assessment for Service Coordinators’, ‘Developing Meaningful Intervention Plans’, ‘Eligibility and The Use of Informed Clinical Opinion in Early Intervention’. The EI Training Program continues to research and develop new curricula. Online learning opportunities have also broadened with the piloting of webcasting and the collaborative efforts of the Illinois Autism/PDD Technical Assistance Project, ISU and the Training Program to bring online, ‘Autism Spectrum Disorders’. The Online Systems Overview Training was piloted and unveiled as an approved option for meeting the Illinois EI credential required Systems Training. This training format continues to gain momentum with over 500 enrolled and 300 having completed the online training since January of this year.

Looking ahead to 2008-09 the Training Program will continue to use your feedback in the planning and development of training opportunities as directed by the DHS Bureau of Early Intervention. In the works are discipline specific training modules. The Child Outcomes Project continues to gather data and will revise its training curriculum to meet the needs of the State as data analysis evolves.

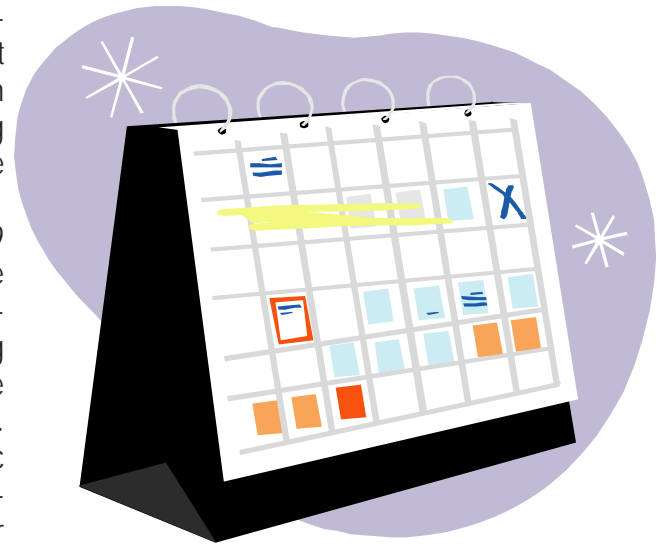
In order to enable Interpreters already enrolled with the CBO to meet their September 1st compliance deadline, the summer months will see an expanded schedule of Bi-Lingual Language Proficiency Testing and Training dates (see page four for current schedule).

The Training Program is approaching the conference format differently this year. In order to be more fiscally responsible, the Training Program will be collaborating with various entities and organizations in Illinois to offer early intervention conference presentations and/or tracks as part of other established professional conferences.

Conferences to look for include:

- “Trends in Autism and Early Intervention” on September 16, 2008 in Fairview Heights;
- “Illinois Physical Therapy Association Fall Conference: Moving in All the Right Directions” on September 26-27, 2008 in Naperville;
- “The Child Behind the Numbers: A Conference on Early Childhood Evaluation and Assessment” on October 31, 2008 in Chicago.

Go to www.illinoiseittraining.org to find out more information. Hope to see you there!

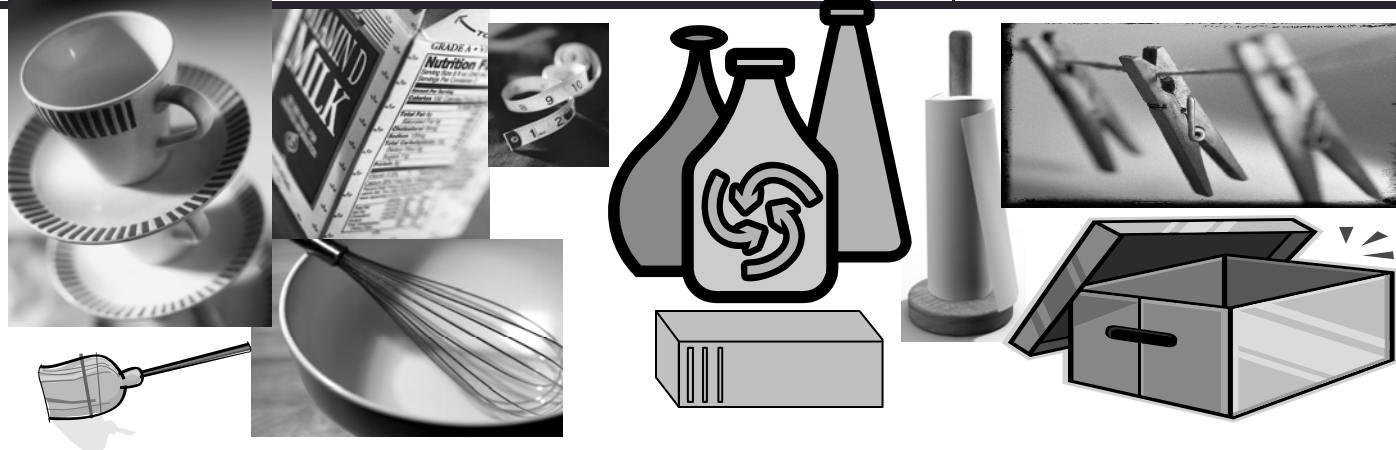


Using the Family's Stuff...

Developed by Lynn Berry, RTC for the Illinois EI Training Program and introduced on May 6th in Effingham, "Using the Family's Stuff...Incorporating the Use of Everyday Items with Children and Their Families" a highly interactive and hands-on training session sparked lots of creativity and discussion. This workshop addresses the benefits of using everyday items found in most family home's or easily obtained by early interventionists for minimal or no cost. Purchasing and using toys as therapy tools can be expensive, overwhelming, unrealistic and intimidating for many families.

With lots of 'stuff' on hand to experiment with, lots of examples of strategies and 'stuff' that works and lots of energy-charged discussion, the participants of this session came up with lots of ideas worth sharing. Here is a sampling...

ITEM:	USES:
Milk Jug	A weighted item; ring toss; cut to make a scoop; drop items into it; use as a shaker; echoing; pour; play house
Big Can	Drum; sit on it; stability; hide-n-seek; attach ribbon to it; make stilts; put slit in top to put things in and out
Bubble Wrap	Stomping; verbalize "pop"; pop with hands, feet, sit/hip flexion; toe walking; size concepts; requesting; anger release; jumping; fine motor skills
Toilet Paper Roll	Gait training; 'I Spy'; Microphone; binoculars, rolling
Koosh Ball	Sensory, attention problems; throw to a target; request; action words; strengthening
Boxes of varied sizes	Make a touch box; hide objects under or in; get in and out of; balance on top of head; put items in and out; guess what is in the box; make a mailbox; tip toe balance;
Socks/ Sock Puppets	Role play; conversational turn taking; ID body parts; social stories; anger management; singing; imitation/modeling; good touch/bad touch talks; desensitization; pretend play;
Dress Up	Role of tape as a bracelet; bowl as a hat; ribbon/yarn as necklace, belt
Phone Books	Secure with tape so they do not open and use to step up, step down; sit/stand on
Ribbon	Sensory-face/hands; dress-up; throw-up; crawl under; tugging; leader; horse



Interpreter Testing and Training Summer Schedule

Language Proficiency Exam Dates

June 26th - Lombard	July 30th - Grayslake
June 27th - Geneva	July 31st - Arlington Heights
July 1st - Grayslake	August 5th - Tinley Park
July 7th - Swansea	August 11th - Aurora
July 8th - Tinley Park	August 12th - TBD
July 10th - Arlington Heights	August 18th - TBD
July 14th - Loves Park	August 22nd - TBD
July 23rd - Springfield	August 28th - Rolling Meadows

Interpreter Training Dates

June 20th - Maryville
 June 24th - Aurora
 July 9th - Carol Stream
 July 21st - Forest Park
 July 22nd - Rolling Meadows
 August 25th - Crystal Lake
 August 27th - Tinley Park

For further information regarding these dates, please log on to the Illinois Early Intervention Training Program's Website, www.illinoiseittraining.org. Details can be found by selecting the upcoming EI calendar of events and then searching by categories, 'Interpreter Testing' and/or 'Interpreter Training'

The Illinois EI Training Program
7550 W 183rd Street
Tinley Park, IL 60477

NONPROFIT
U.S. POSTAGE
PAID
TINLEY PARK, IL
PERMIT 321